



**You're  
Welcome**



# POLLUTION



What type of pollution is this?



**Air pollution**

What type of pollution is this?



• **Water pollution**

What type of pollution is this?



• Soil pollution

pro

influ

ence

ecolo

tect

gical

indust

lit

was

ter

environ

rial

natur

ment

fact

al

ory

pol

te

lute

**Protect**

**influence**

**ecological**

**Litter**

**waste**

**environment**

**natural**

**pollute**

**factory**

**industrial**

**Защитить  
окружающую  
среду**

**Влиять на  
животных**

**Экологические  
проблемы**

**Бросать мусор**

**Сливать  
отходы**

**Естественное  
поведение**

**Строить  
фабрики**

**Промышленные  
отходы**





Listen to the song and Fill the  
gaps

Today you are going camping

With your family, friends or class.

Please help us, don't  
drop any litter!

Because your litter lives longer  
than us.

# Who is speaking in the first poem?



Today you cut down your forests

But the planet needs our leaves.

Please stop it because tomorrow

You'll have no air to breathe !

# Who is speaking in the second poem?



forest



tree



river



sea



field

Because nothing is forever

And nature is getting tired.

If we don't stop and think today

Tomorrow the Earth could die.

With its green fields, blue oceans, and



earth

field

You can have a bath or a shower

But today is the time to think.

Save the rivers because without them

You'll have no water to drink.

# Who is speaking in the fourth poem?





**Give the poem a name!**

**"Tomorrow and today"**

**"Save the environment!"**

**"Please, stop!"**

# **Serious questions**

**How do people destroy the environment?**

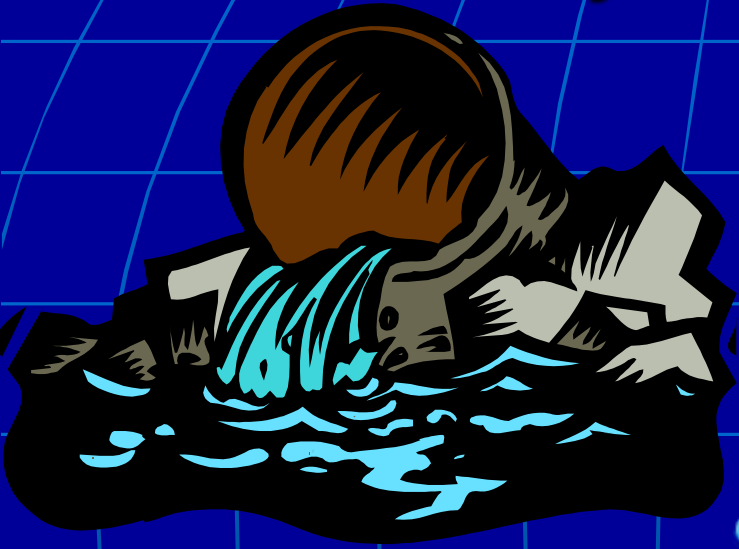
# Read the text

- **Air pollution.**
- People can't live without air. People need air to breathe. But people pollute air. They use different sprays. Factories make waste and pollute air. When we use cars and buses they produce car fumes. When people breathe polluted air they can get ill.

# Read the text

- **Water pollution**
- People can't live without water. People need water to drink and to wash. But people pollute water.
- People pour domestic and industrial waste into rivers and oceans. So fish become toxic. It is dangerous for people to eat such fish. People can get ill or even die.

# Make a story about **Water pollution**



- Can't live \ water
- water \ to drink
- Factories \ waste
- People \ pour waste
  - dangerous
  - Fish \ toxic
- When \ eat \ get ill

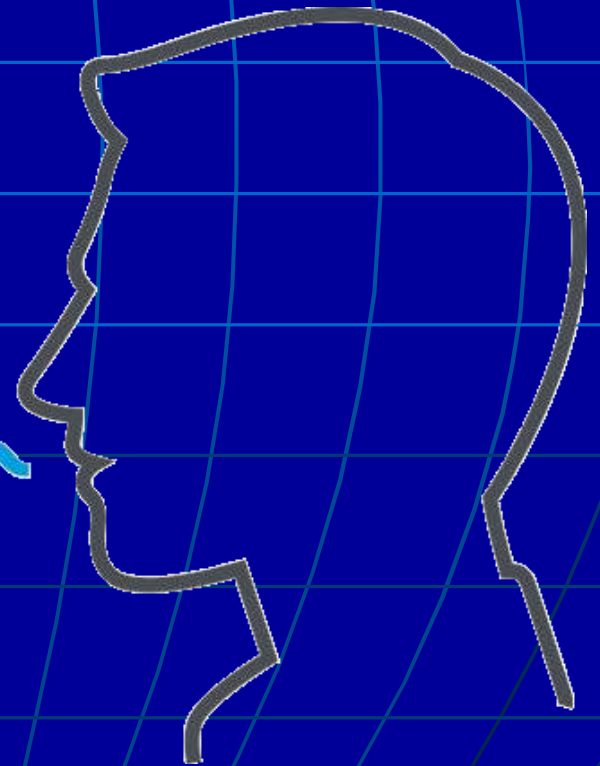
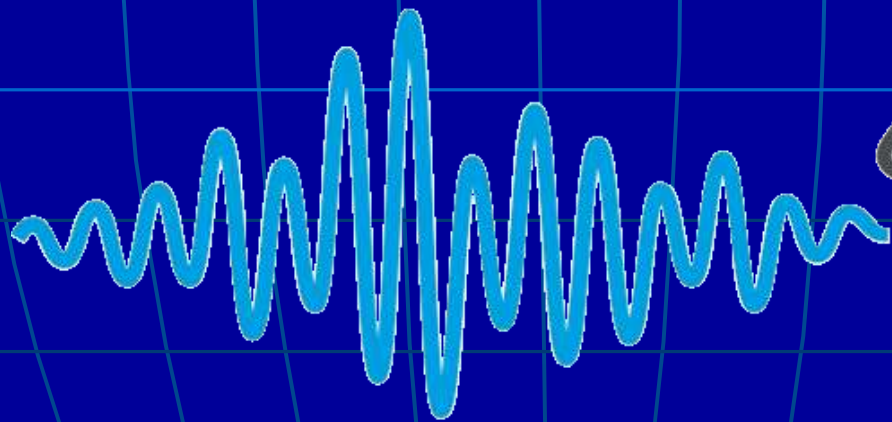
# Air Pollution



- Can't live \ air
- People \ to breathe
- Factories \ waste
- Cars and buses \ car fume
- People \ sprays
  - dangerous
- When \ breath \ get ill



Voice a video





**Don't dump domestic and industrial waste in the countryside.**

**Plant more trees.**

**Don't make fires in the forests.**

**Clear rubbish from lakes and rivers.**



**Don't pour waste into rivers, lakes, seas and oceans.**



**Our factories mustn't pollute the air.**

**Take care of animals!**

**Keep your towns, cities and countryside clean.**



# DO!

1. Take care of animals!
2. Plant more trees.
3. Keep your towns, cities and countryside clean.
4. Clear rubbish from lakes and rivers.



# DON'T

1. Don't make fires in the forests.
2. Our factories mustn't pollute the air
3. Don't dump domestic and industrial waste in the countryside.
4. Don't pour waste into rivers, lakes, seas and oceans.


# Reflection

I like this lesson



I don't like this lesson





Thank you for  
attention